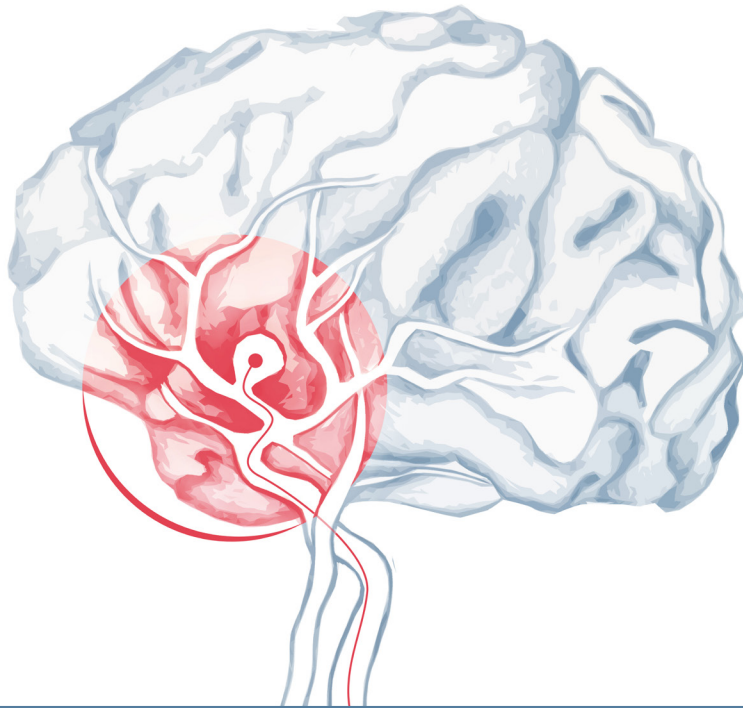


UNRUPTURED ANEURYSM

USING
BIOMODEX® EVIAS™



**AN INNOVATIVE APPROACH FOR ADVANCED PHYSICIAN
TRAINING AND PATIENT SPECIFIC REHEARSAL**



BIOMODEX® EVIAS™
STATION

+



UNRUPTURED ANEURYSM
CARTRIDGE

=



UNRUPTURED ANEURYSM
TRAINING & REHEARSAL

- DESIRED MECHANICAL BEHAVIOR BASED ON INVIVOTECH® TECHNOLOGY PROVIDING CRITICAL TACTILE FEEDBACK
- FROM CTA AND/OR 3D ROTATIONAL ANGIOGRAPHY TO 3D PRINTED MODEL WITHIN 5 DAYS
- LIGHTWEIGHT, PORTABLE, PLUG-AND-PLAY STATION

Disclaimer: This product is not a medical device and is not intended to diagnose, treat, cure, or prevent any health condition. BIOMODEX® products have been designed for training and their safety and effectiveness as medical devices have not been demonstrated.

UNRUPTURED ANEURYSM



KEY FEATURES



Single-Use Unruptured Aneurysm Cartridges

- Utilizes FDA cleared and CE marked software for segmentation of 3D DSA or CTA
- INVIVOTECH® is a proprietary* technology that integrates tissue biomechanics in 3D printed anatomical twins
- Anatomical twin for intracranial aneurysm procedures includes vertebral artery access, ICA, distal vasculature and aneurysms
- Contrast agent and X-ray compatible

STATION



BIOMODEX® EVIAS™ Station

- For use in cathlab
- Compact and portable
- Plug-and-play
- Adjustable aortic arch
- Simulated systemic flow
- BLOODSIM™ replicates blood density and viscosity
- Compatible with all BIOMODEX® EVIAS™ cartridges



BIOMODEX® EVIAS™ Station Package

UNRUPTURED ANEURYSM PROCEDURES



BIOMODEX® EVIAS™ System Under Fluoroscopy

- Flow diversion
- Intrasaccular device
- Coil embolization
- Balloon-assisted coiling
- Stent placement



Navigation Under Fluoroscopy

US Office:
300 Crown Colony Drive, Suite 504
Quincy, MA 02169 - USA

EMEA Office:
2 rue de la Roquette
75011 Paris - FRANCE

BIOMODEX.COM