



BIOMODEX[®]

DISCLAIMER: Biomodex products are not medical devices and are not intended to diagnose, treat, cure, or prevent any health condition. These products have been designed for training and their safety and effectiveness as medical devices have not been demonstrated.

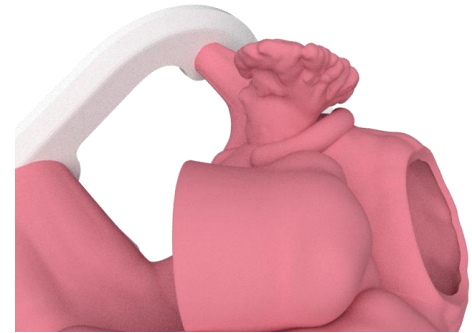
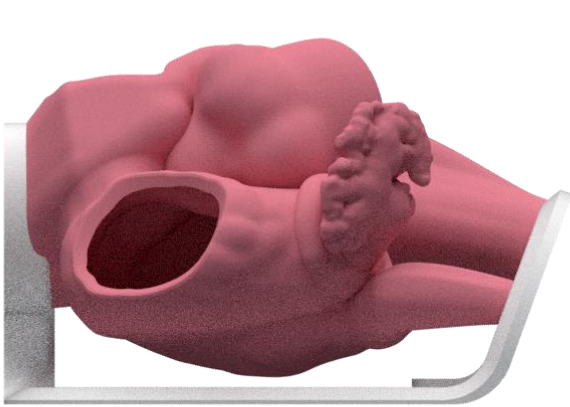


ANATOMY A007

2019-12-20

DISCLAIMER: Biomodex products are not medical devices and are not intended to diagnose, treat, cure, or prevent any health condition. These products have been designed for training and their safety and effectiveness as medical devices have not been demonstrated.

CARTRIDGE A007

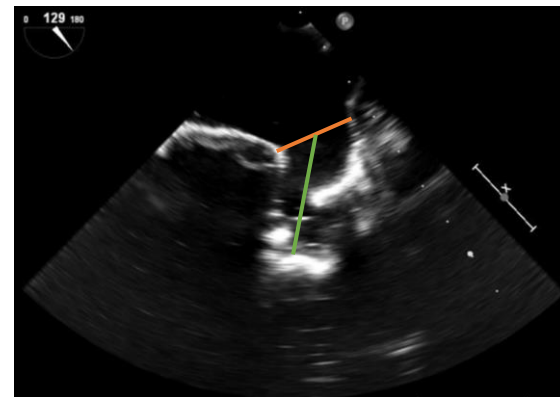
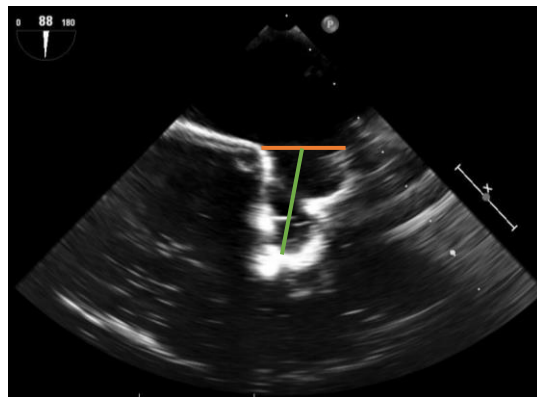
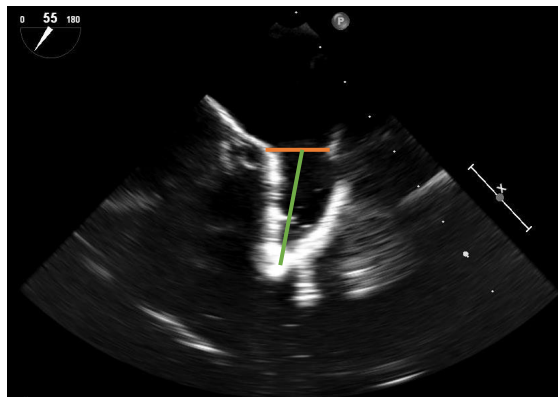
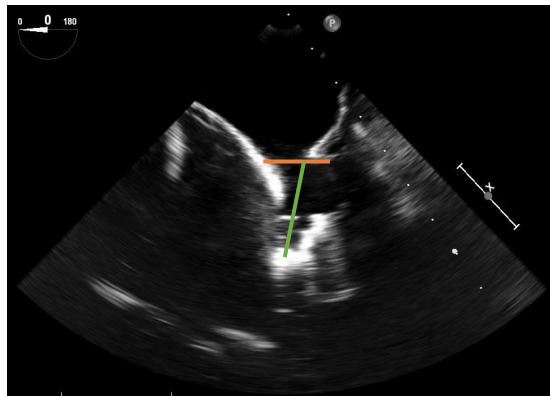


Printed cartridge of the anatomy



LAA MEASURES

LAA MEASURES



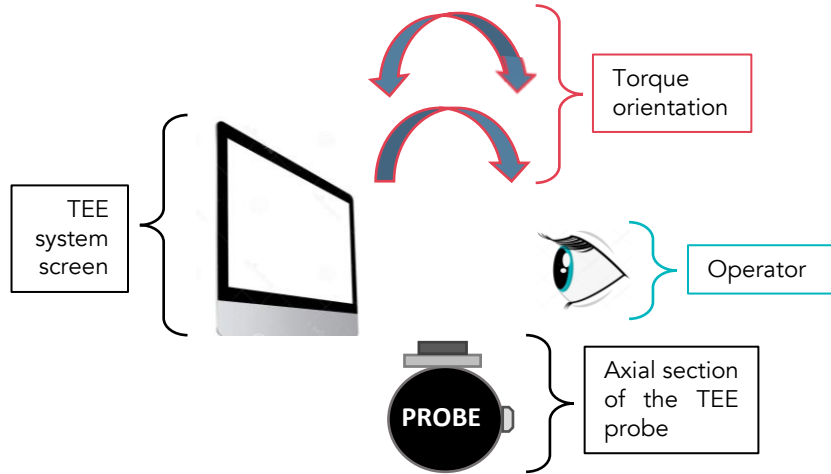
TEE angles	Ostium (mm)	Length (mm)
0°	15	22
45°	12	26
90°	16.5	24.5
135°	17.5	29



TEE INSTRUCTION FOR USE

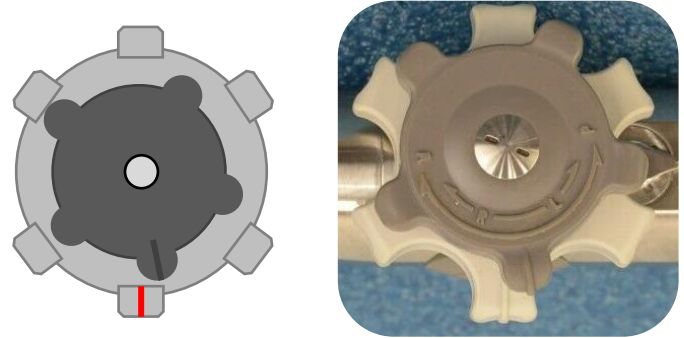
IFU ECHO SCHEMES

*Probe position
& Torque orientation*



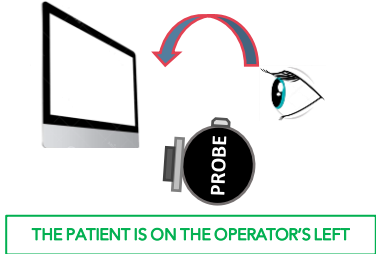
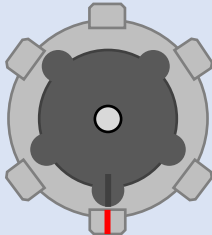
THE PATIENT IS ON THE OPERATOR'S LEFT

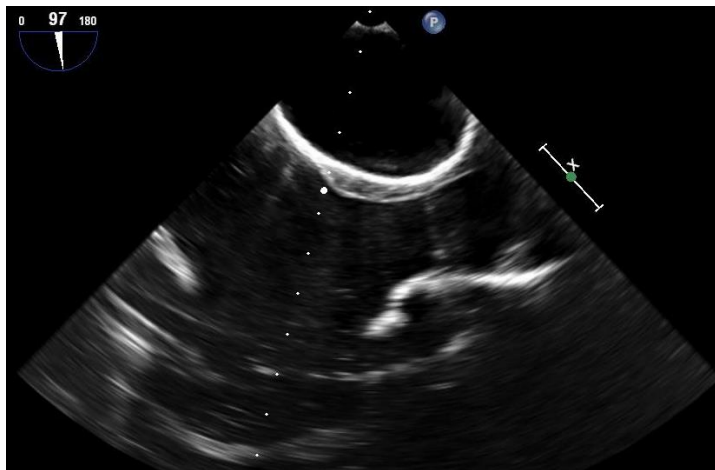
Wheels position



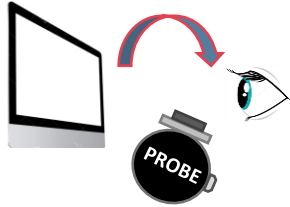
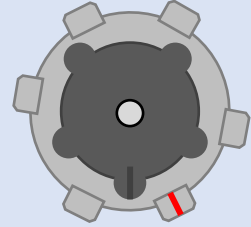
THE FOLLOWING ECHO INSTRUCTIONS HAVE BEEN DETERMINED WITH A X7-2t PHILIPS PROBE AND A iE33 PHILIPS SYSTEM

BICAVA VIEW

Angle	Probe Depth	Probe position & Torque orientation	Wheels position
97°	30 cm	 <p>THE PATIENT IS ON THE OPERATOR'S LEFT</p>	

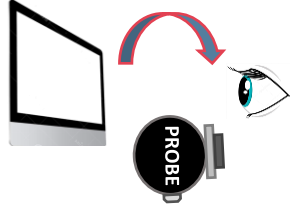
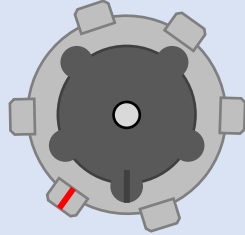


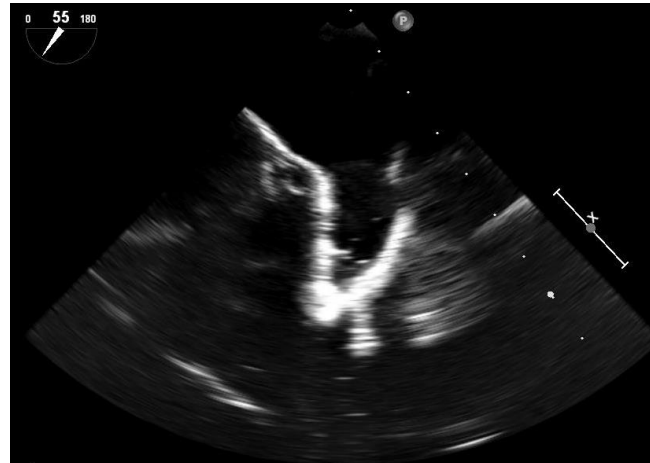
SHORT AXIS VIEW

Angle	Probe Depth	Probe position & Torque orientation	Wheels position
45°	30 cm	 <p>THE PATIENT IS ON THE OPERATOR'S LEFT</p>	

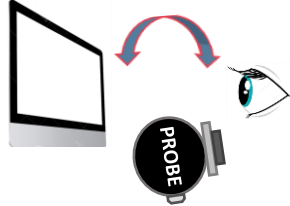
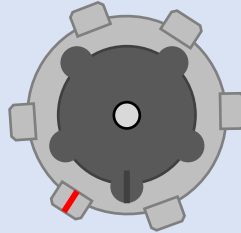


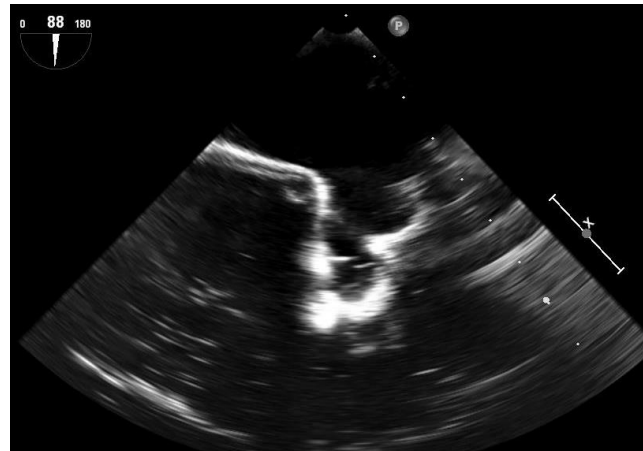
LAA 45°

Angle	Probe Depth	Probe position & Torque orientation	Wheels position
55°	29-30 cm	 <p>THE PATIENT IS ON THE OPERATOR'S LEFT</p>	

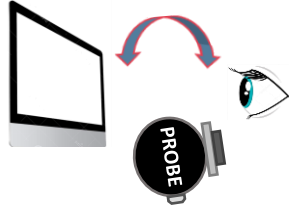
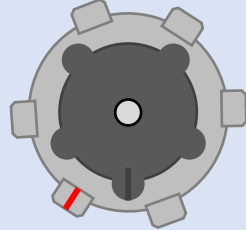


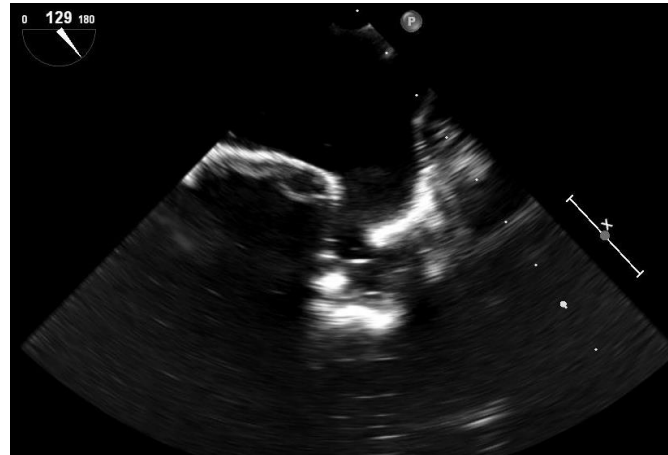
LAA 90°

Angle	Probe Depth	Probe position & Torque orientation	Wheels position
88°	29-30 cm	 <p>THE PATIENT IS ON THE OPERATOR'S LEFT</p>	

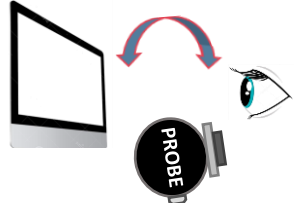
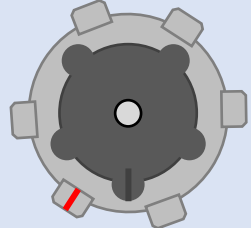


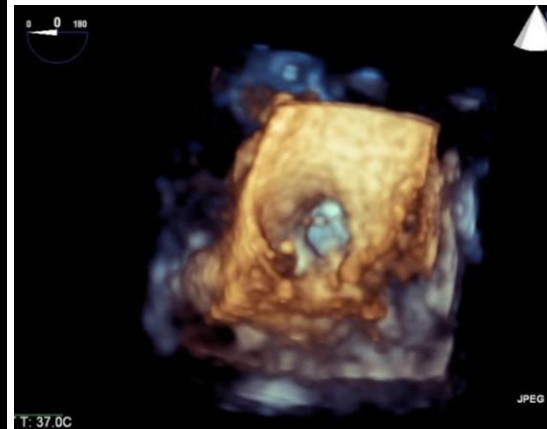
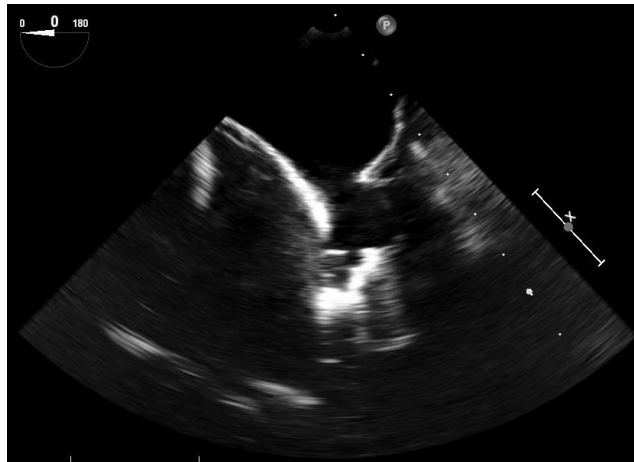
LAA 135°

Angle	Probe Depth	Probe position & Torque orientation	Wheels position
129°	29-30 cm	 <p>THE PATIENT IS ON THE OPERATOR'S LEFT</p>	



LAA 0°

Angle	Probe Depth	Probe position & Torque orientation	Wheels position
0°	29 cm	 <p>THE PATIENT IS ON THE OPERATOR'S LEFT</p>	





BIOMODEX[®]

DISCLAIMER: Biomodex products are not medical devices and are not intended to diagnose, treat, cure, or prevent any health condition. These products have been designed for training and their safety and effectiveness as medical devices have not been demonstrated.

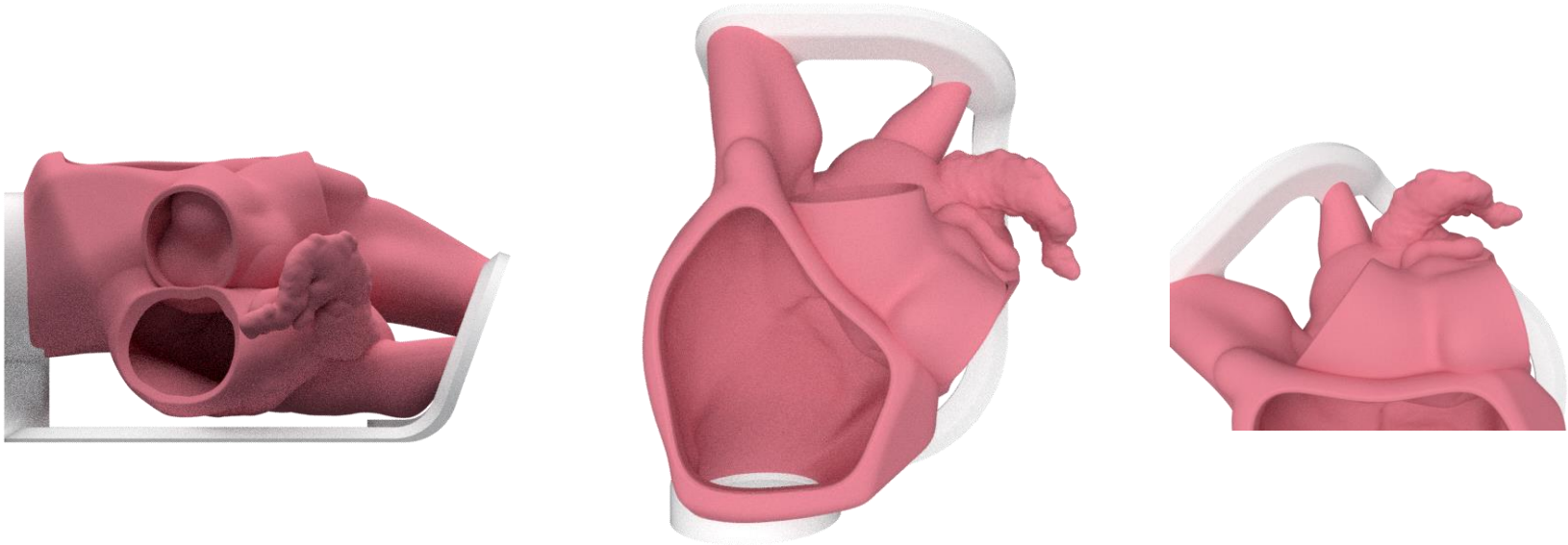


ANATOMY A011

2019-12-20

DISCLAIMER: Biomodex products are not medical devices and are not intended to diagnose, treat, cure, or prevent any health condition. These products have been designed for training and their safety and effectiveness as medical devices have not been demonstrated.

CARTRIDGE

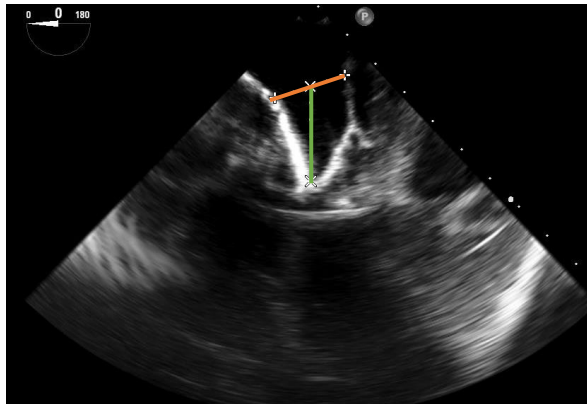


Printed cartridge of the anatomy

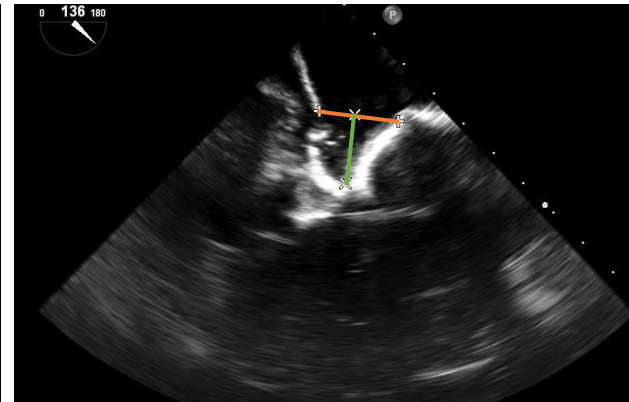
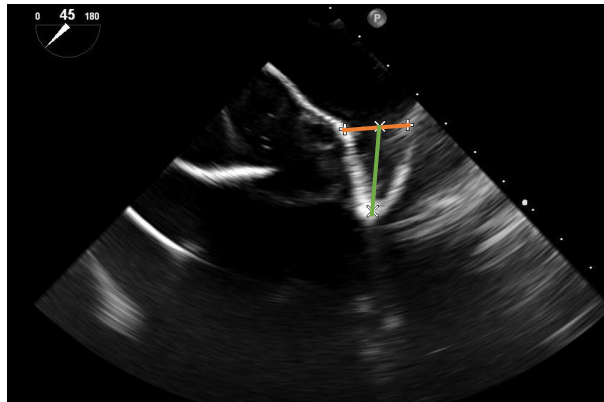
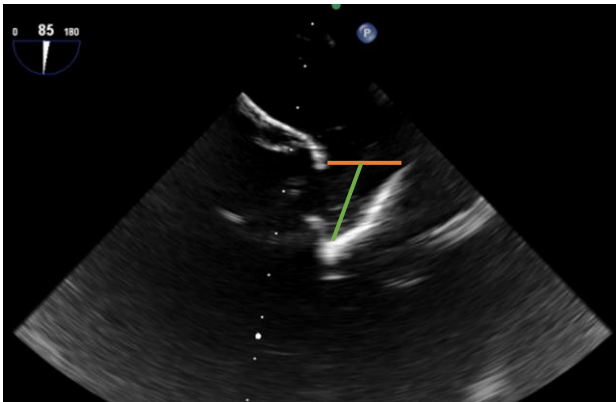


LAA MEASURES

LAA MEASURES



TEE angles	Ostium (mm)	Length (mm)
0°	18	23.5
45°	15.5	21
90°	16.5	20
135°	19	16.5

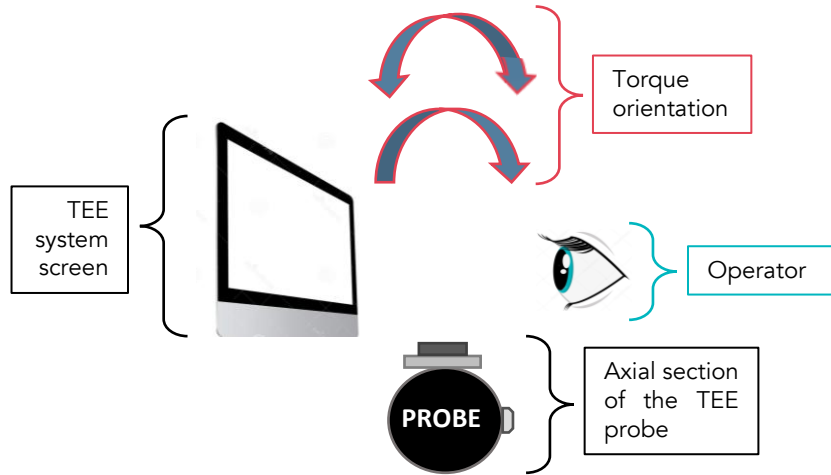




TEE INSTRUCTION FOR USE

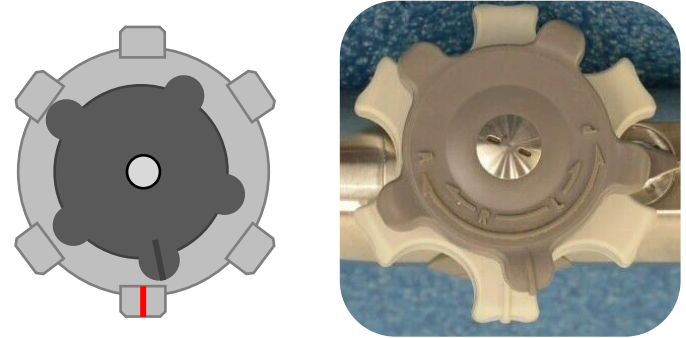
IFU ECHO SCHEMES

*Probe position
& Torque orientation*



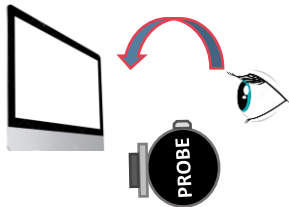
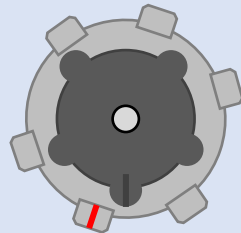
THE PATIENT IS ON THE OPERATOR'S LEFT

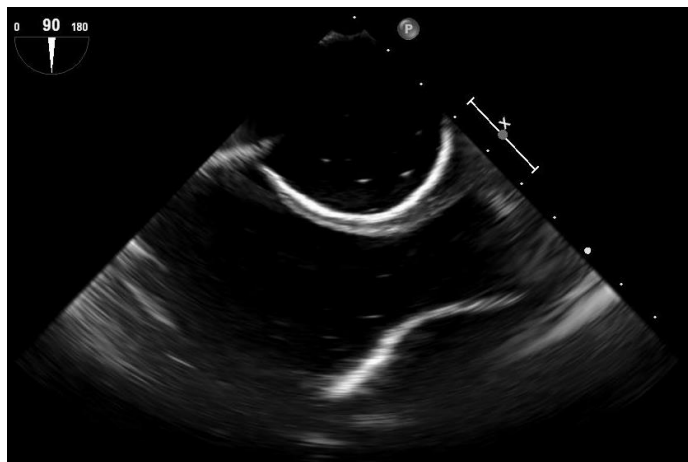
Wheels position



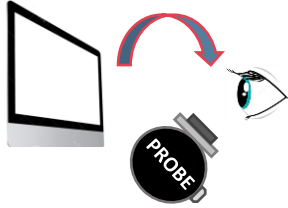
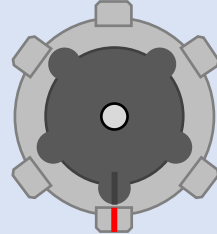
THE FOLLOWING ECHO INSTRUCTIONS HAVE BEEN DETERMINED WITH A X7-2t PHILIPS PROBE AND A iE33 PHILIPS SYSTEM

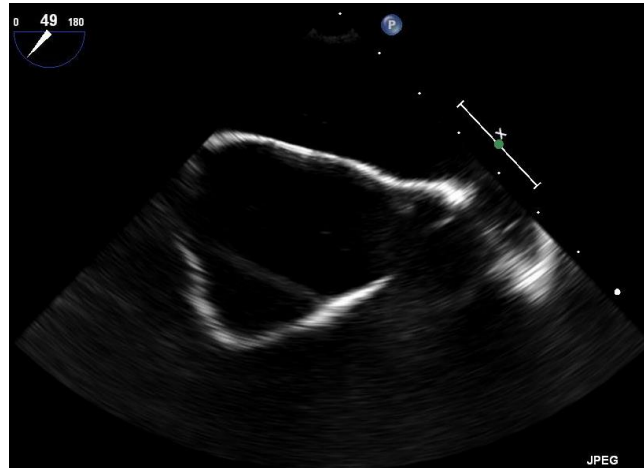
BICA VA VIEW

Angle	Probe Depth	Probe position & Torque orientation	Wheels position
90°	29-30 cm	 <p>THE PATIENT IS ON THE OPERATOR'S LEFT</p>	

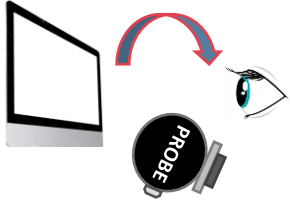
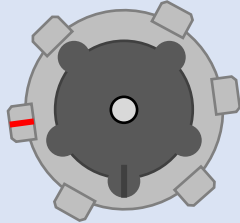


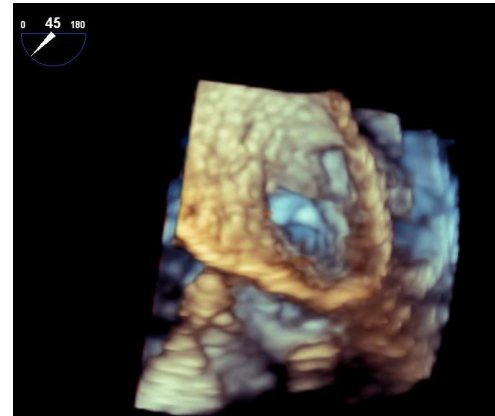
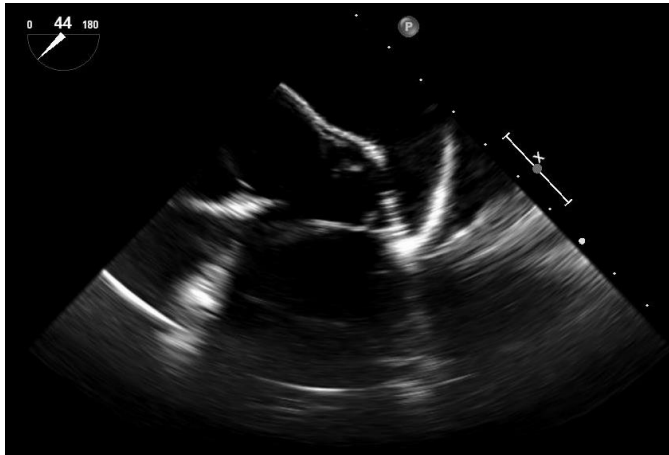
SHORT AXIS VIEW

Angle	Probe Depth	Probe position & Torque orientation	Wheels position
49°	30 cm	 <p>THE PATIENT IS ON THE OPERATOR'S LEFT</p>	

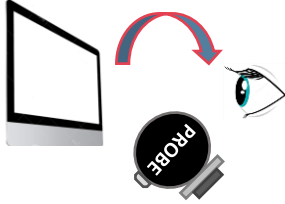
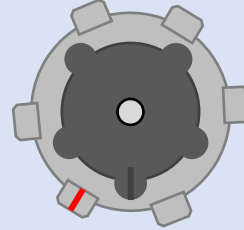


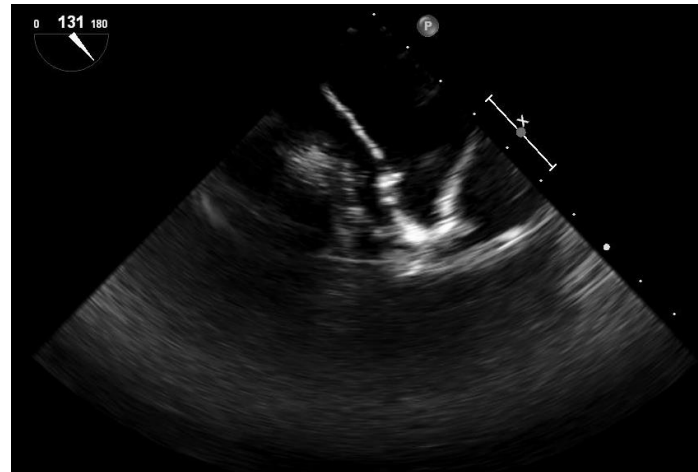
LAA 45°

Angle	Probe Depth	Probe position & Torque orientation	Wheels position
45°	30 cm	 <p>THE PATIENT IS ON THE OPERATOR'S LEFT</p>	

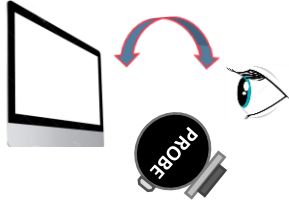
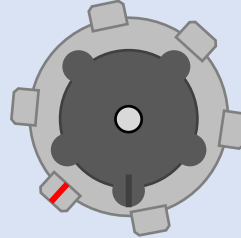


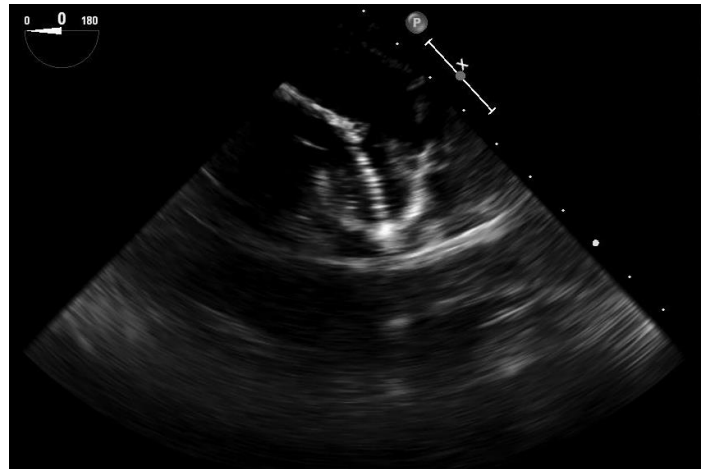
LAA 135°

Angle	Probe Depth	Probe position & Torque orientation	Wheels position
131°	29-30 cm	 <p>THE PATIENT IS ON THE OPERATOR'S LEFT</p>	

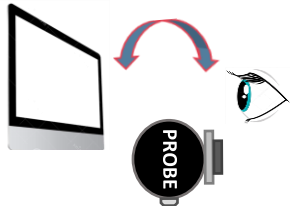
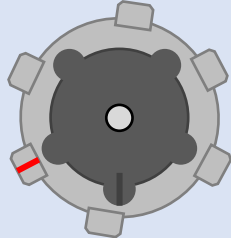


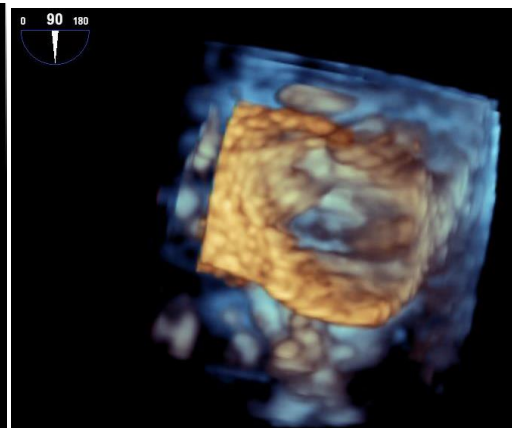
LAA 0°

Angle	Probe Depth	Probe position & Torque orientation	Wheels position
0°	28 cm	 <p>THE PATIENT IS ON THE OPERATOR'S LEFT</p>	



LAA 90°

Angle	Probe Depth	Probe position & Torque orientation	Wheels position
90°	30 cm	 <p>THE PATIENT IS ON THE OPERATOR'S LEFT</p>	





BIOMODEX[®]

DISCLAIMER: Biomodex products are not medical devices and are not intended to diagnose, treat, cure, or prevent any health condition. These products have been designed for training and their safety and effectiveness as medical devices have not been demonstrated.



ANATOMY A013

2019-12-20

DISCLAIMER: Biomodex products are not medical devices and are not intended to diagnose, treat, cure, or prevent any health condition. These products have been designed for training and their safety and effectiveness as medical devices have not been demonstrated.

CARTRIDGE

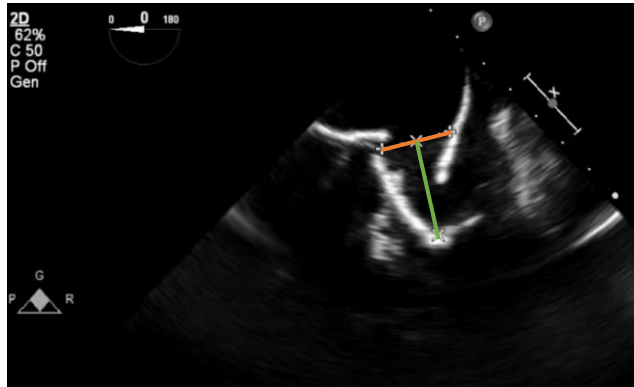


Printed cartridge of the anatomy

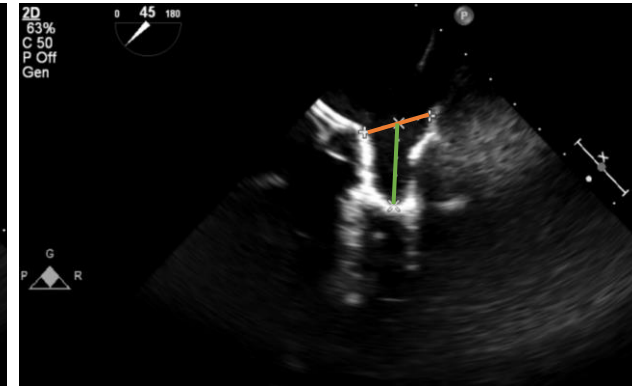
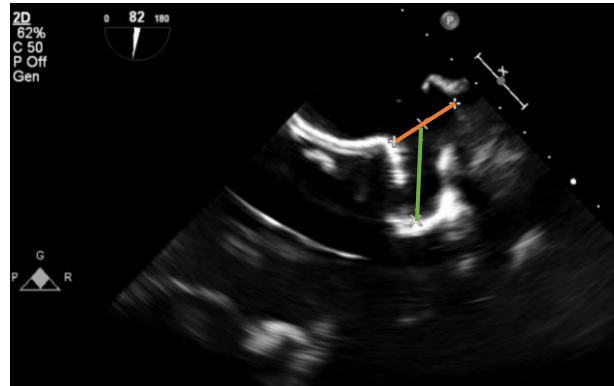
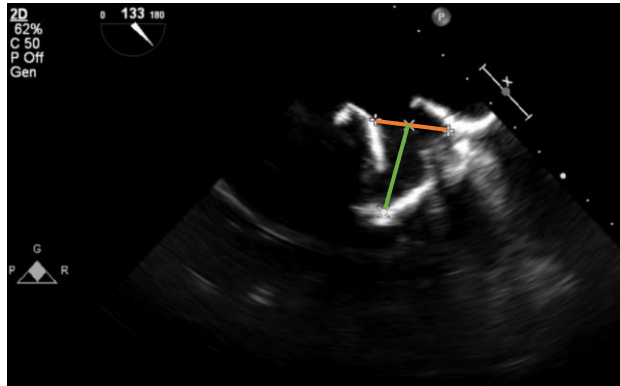


LAA MEASURES

LAA MEASURES



TEE angles	Ostium (mm)	Length (mm)
0°	19	26
45°	19	23.5
90°	20.5	28
135°	21.5	26.5

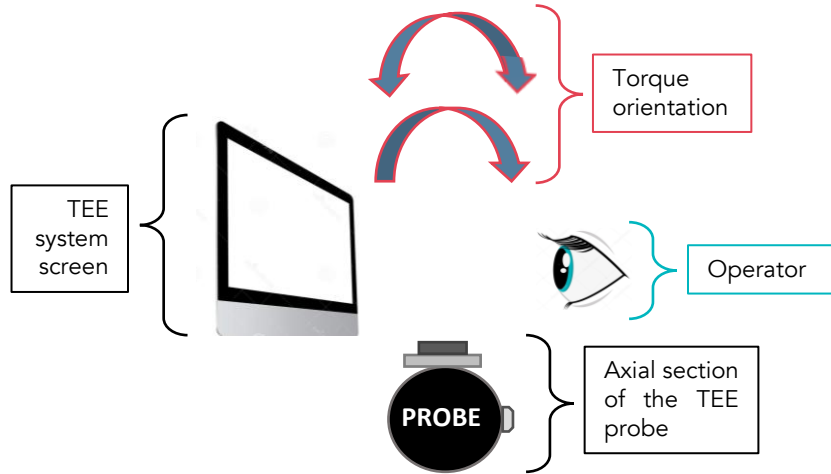




TEE INSTRUCTION FOR USE

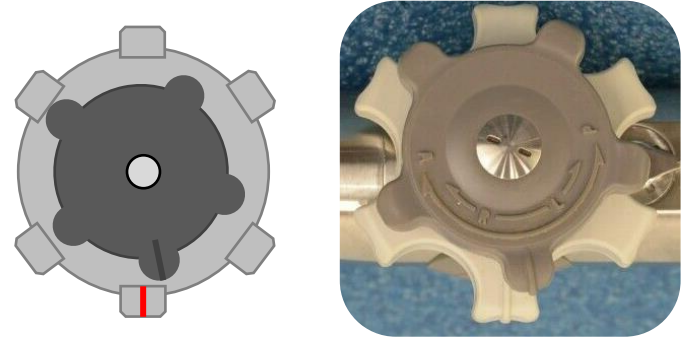
SCHEME LEGEND

Probe position
& Torque orientation



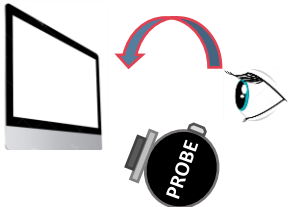
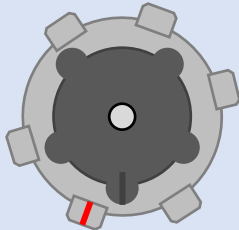
THE PATIENT IS ON THE OPERATOR'S LEFT

Wheels position



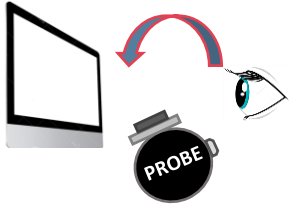
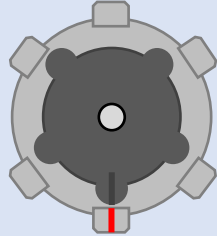
THE FOLLOWING ECHO INSTRUCTIONS HAVE BEEN DETERMINED WITH A X7-2t PHILIPS PROBE AND A iE33 PHILIPS SYSTEM

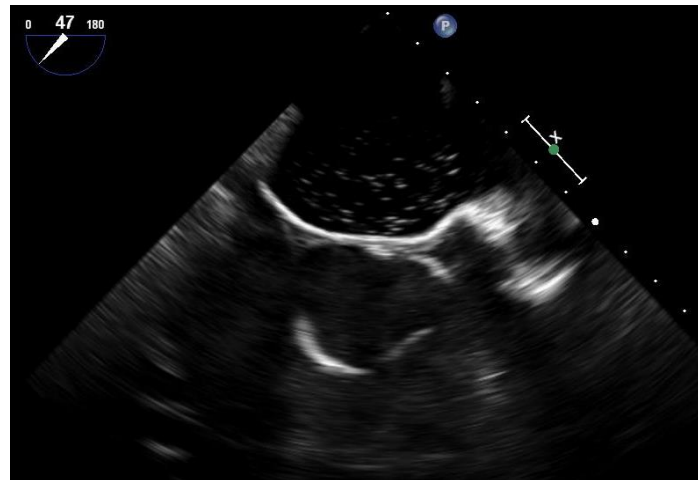
BICA VA VIEW

Angle	Probe Depth	Probe position & Torque orientation	Wheels position
99°	29-30 cm	 <p>THE PATIENT IS ON THE OPERATOR'S LEFT</p>	

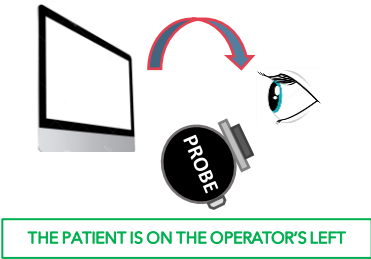
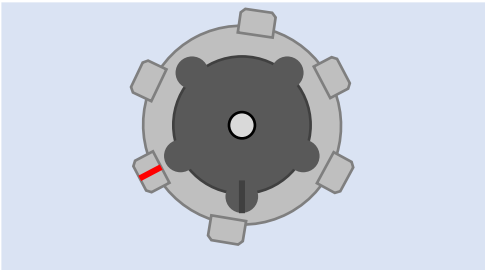


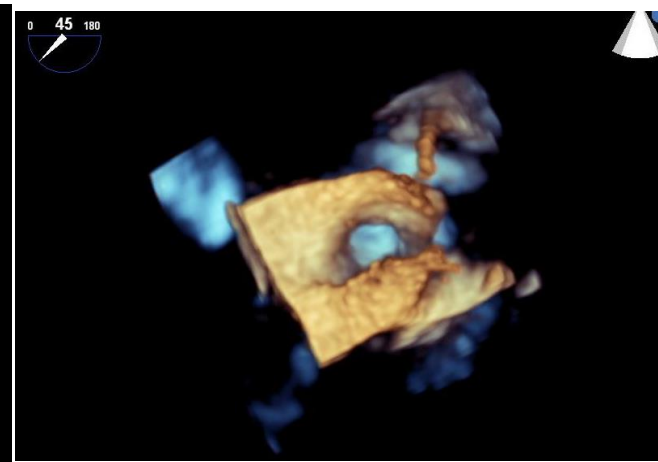
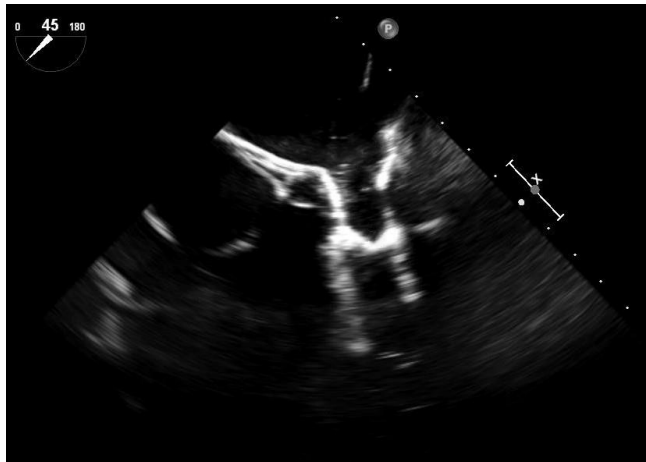
SHORT AXIS VIEW

Angle	Probe Depth	Probe position & Torque orientation	Wheels position
47°	30 cm	 <p>THE PATIENT IS ON THE OPERATOR'S LEFT</p>	

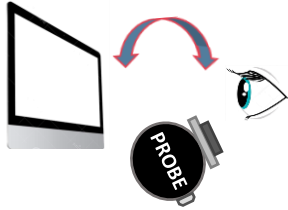
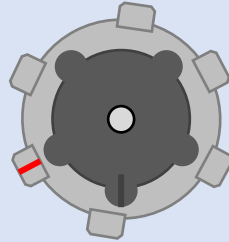


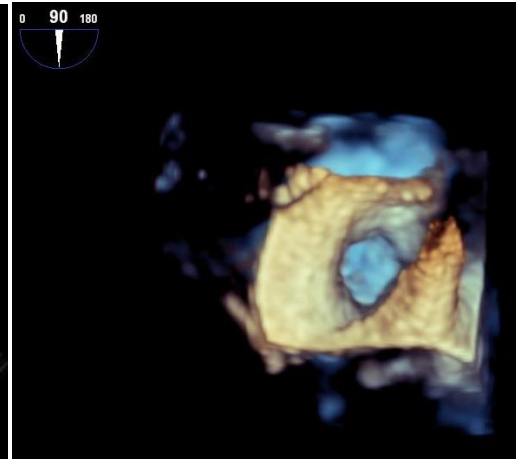
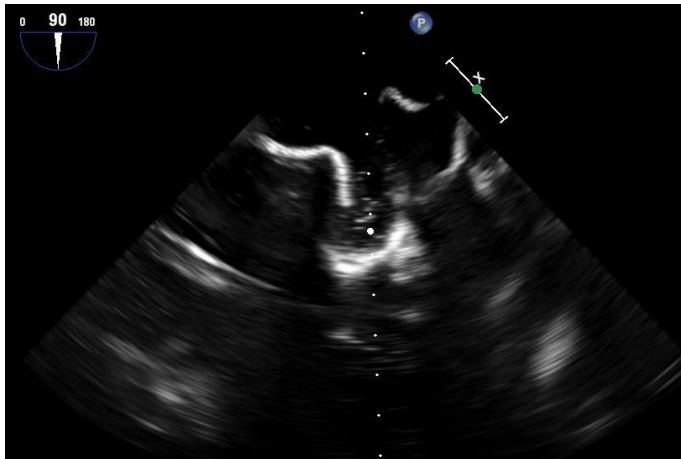
LAA 45°

Angle	Probe Depth	Probe position & Torque orientation	Wheels position
45°	30 cm	 <p>THE PATIENT IS ON THE OPERATOR'S LEFT</p>	

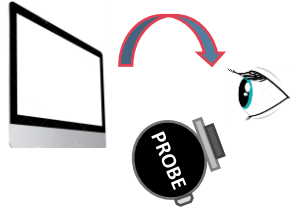
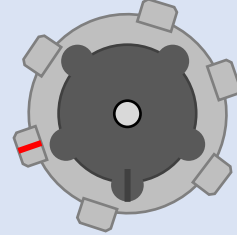


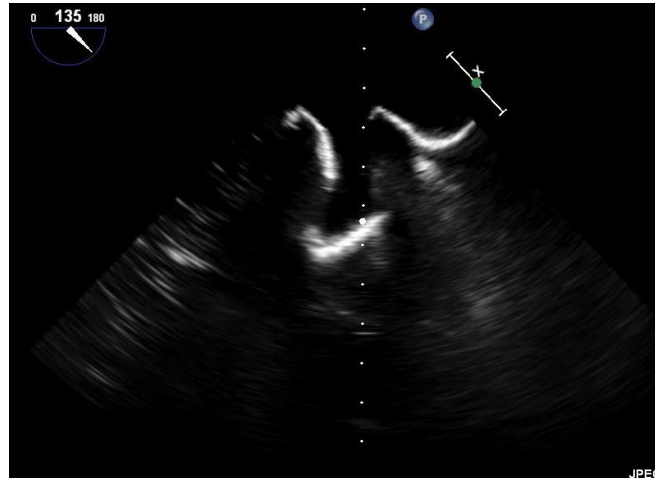
LAA 90°

Angle	Probe Depth	Probe position & Torque orientation	Wheels position
90°	30-31 cm	 <p>THE PATIENT IS ON THE OPERATOR'S LEFT</p>	

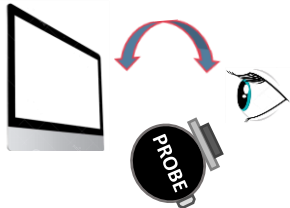
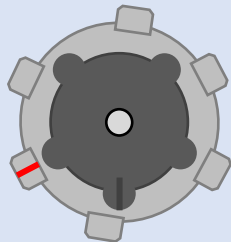


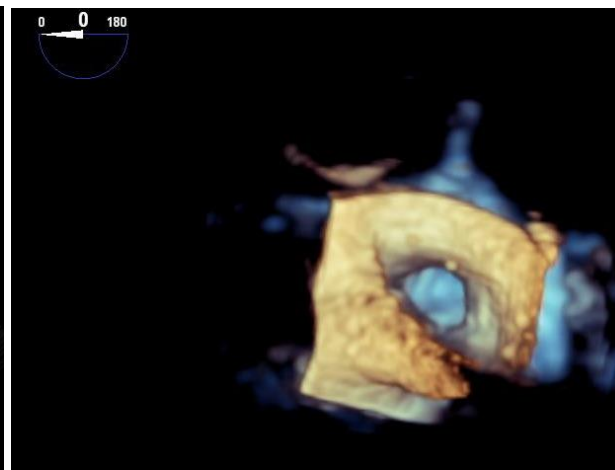
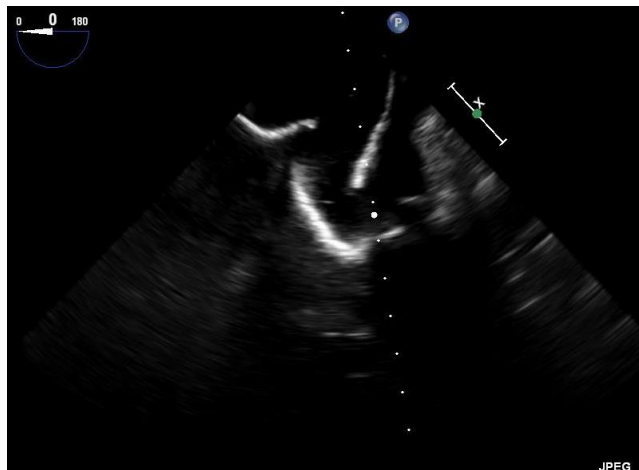
LAA 135°

Angle	Probe Depth	Probe position & Torque orientation	Wheels position
135°	30 cm	 <p>THE PATIENT IS ON THE OPERATOR'S LEFT</p>	



LAA 0°

Angle	Probe Depth	Probe position & Torque orientation	Wheels position
0°	30 cm	 <p>THE PATIENT IS ON THE OPERATOR'S LEFT</p>	





BIOMODEX[®]

DISCLAIMER: Biomodex products are not medical devices and are not intended to diagnose, treat, cure, or prevent any health condition. These products have been designed for training and their safety and effectiveness as medical devices have not been demonstrated.



ANATOMY A015

2019-12-20

DISCLAIMER: Biomodex products are not medical devices and are not intended to diagnose, treat, cure, or prevent any health condition. These products have been designed for training and their safety and effectiveness as medical devices have not been demonstrated.

CARTRIDGE



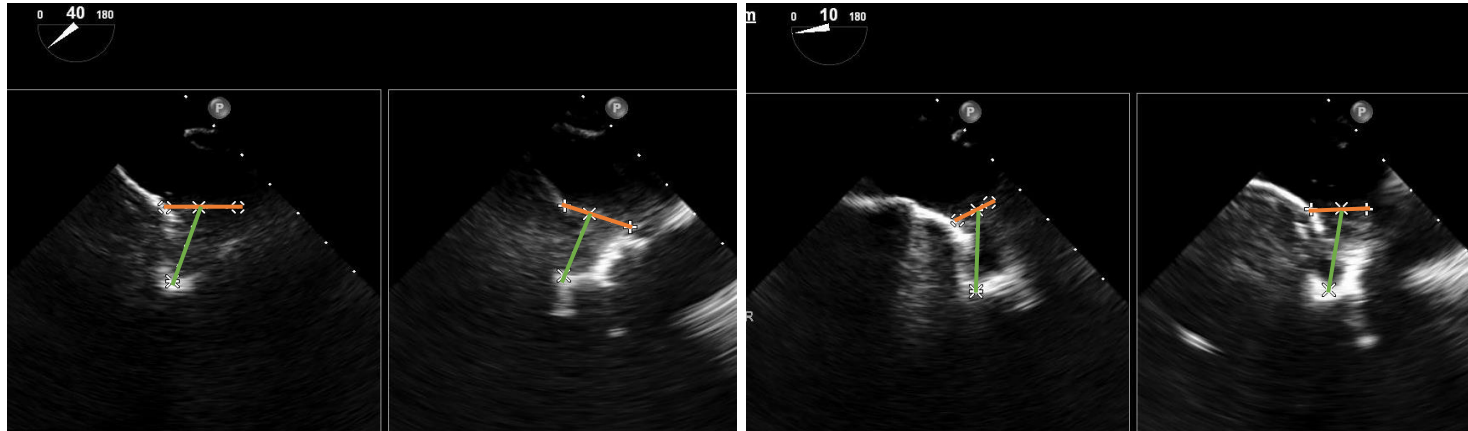
Printed cartridge of the anatomy



LAA MEASURES

LAA MEASURES

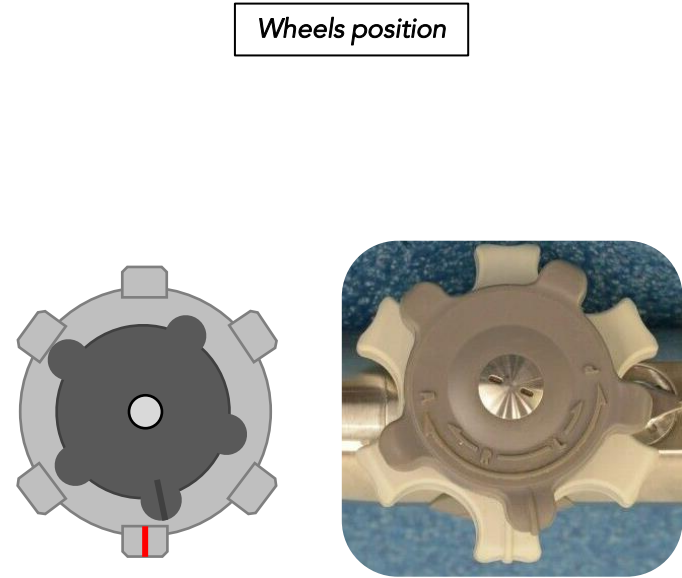
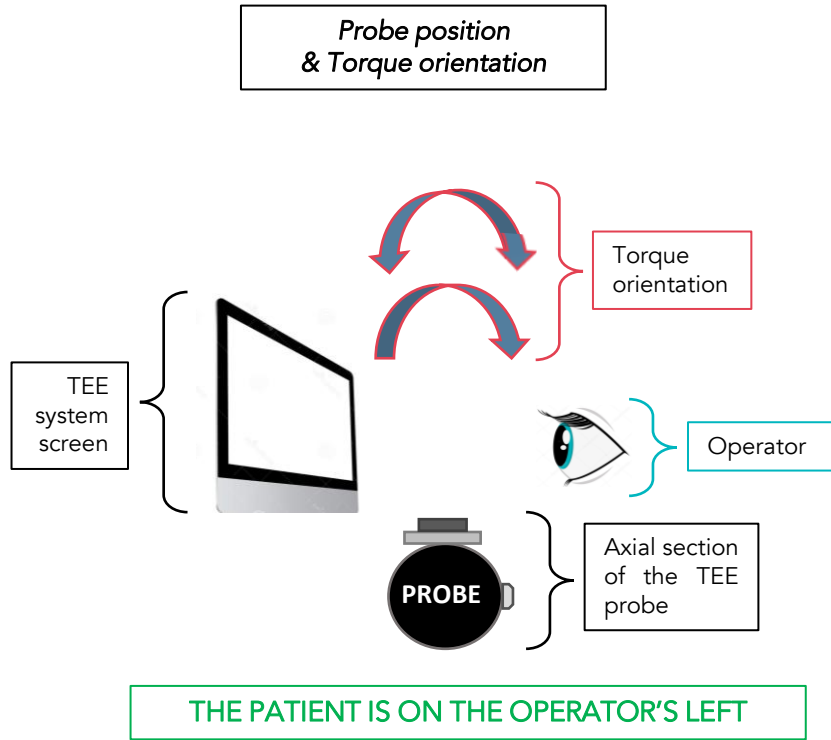
TEE angles	Ostium (mm)	Length (mm)
0°	10	20
45°	18	20
90°	14	20
135°	17	17





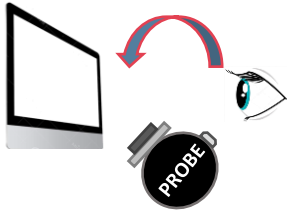
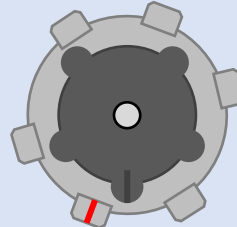
TEE INSTRUCTION FOR USE

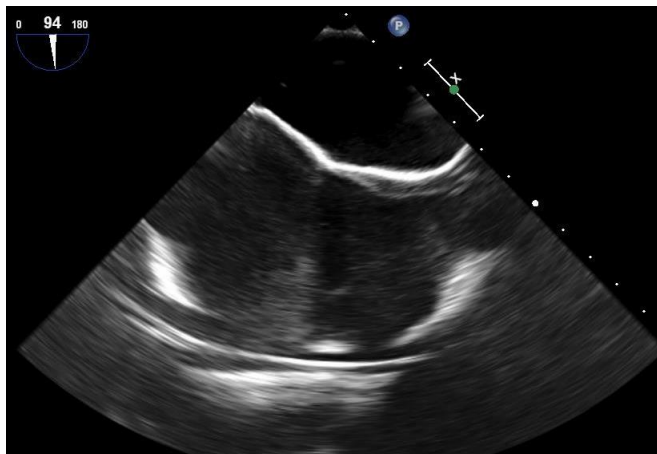
SCHEME LEGEND



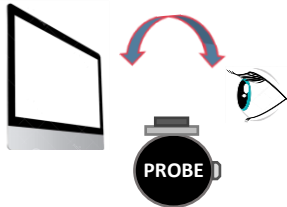
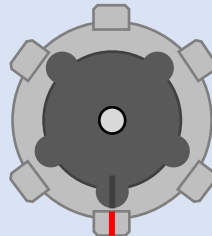
THE FOLLOWING ECHO INSTRUCTIONS HAVE BEEN DETERMINED WITH A X7-2t PHILIPS PROBE AND A iE33 PHILIPS SYSTEM

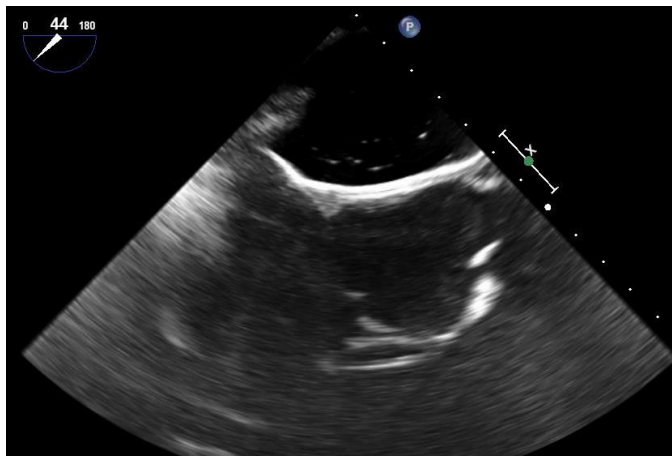
BICA VA VIEW

Angle	Probe Depth	Torque	Wheels
94°	33 cm	 <p>THE PATIENT IS ON THE OPERATOR'S LEFT</p>	

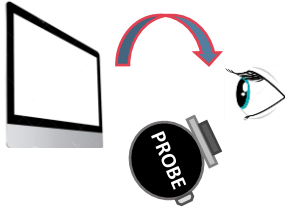
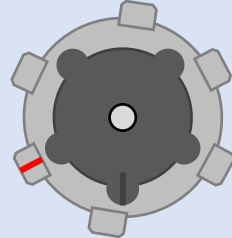


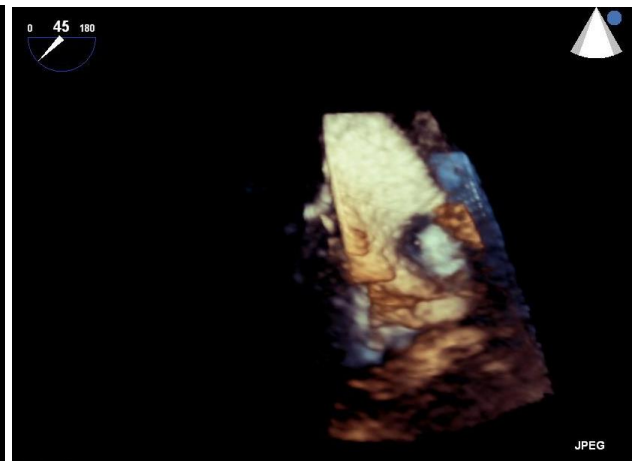
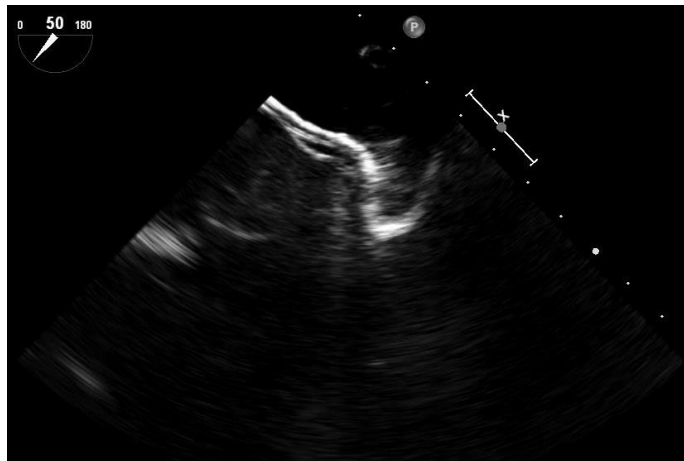
SHORT AXIS VIEW

Angle	Probe Depth	Torque	Wheels
44°	30 cm	 <p>THE PATIENT IS ON THE OPERATOR'S LEFT</p>	

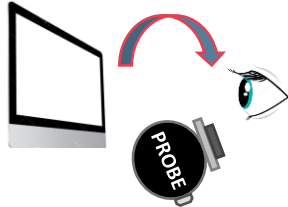
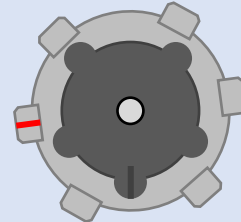


LAA 45°

Angle	Probe Depth	Torque	Wheels
45°	30-31 cm	 <p>THE PATIENT IS ON THE OPERATOR'S LEFT</p>	

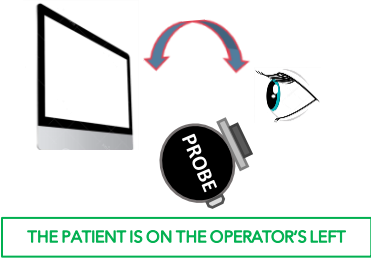
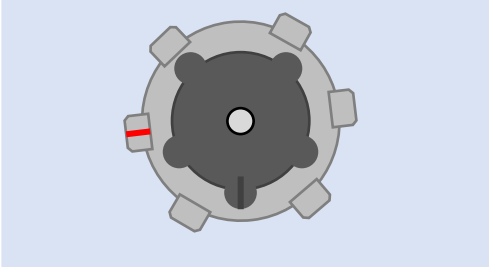


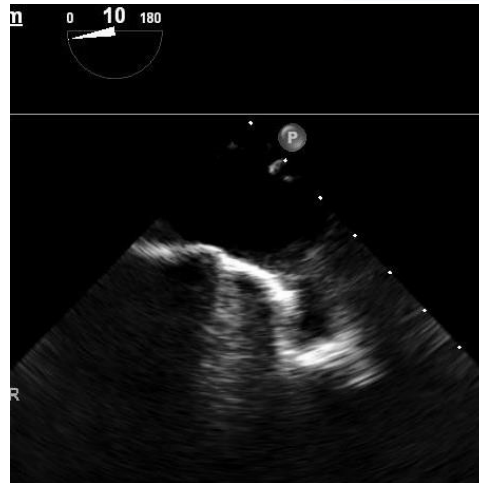
LAA 135°

Angle	Probe Depth	Torque	Wheels
135°	30-31 cm	 <p>THE PATIENT IS ON THE OPERATOR'S LEFT</p>	

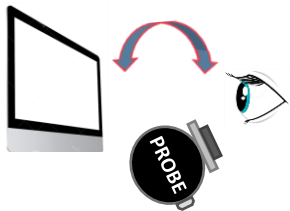
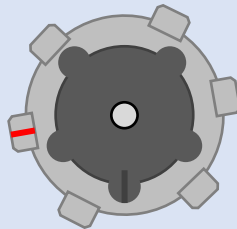


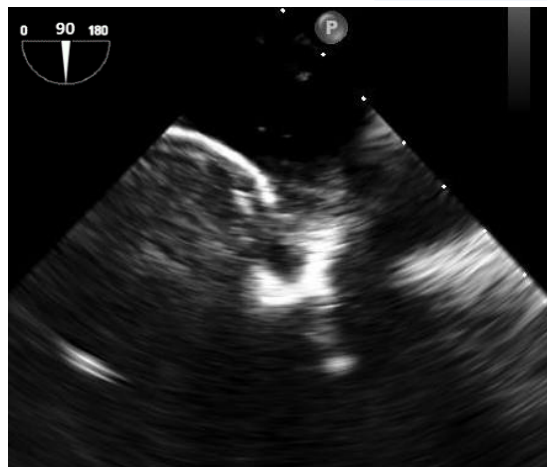
LAA 0°

Angle	Probe Depth	Torque	Wheels
10°	29-30 cm	 <p>THE PATIENT IS ON THE OPERATOR'S LEFT</p>	



LAA 90°

Angle	Probe Depth	Torque	Wheels
90°	30-31 cm	 <p>THE PATIENT IS ON THE OPERATOR'S LEFT</p>	





BIOMODEX[®]

DISCLAIMER: Biomodex products are not medical devices and are not intended to diagnose, treat, cure, or prevent any health condition. These products have been designed for training and their safety and effectiveness as medical devices have not been demonstrated.

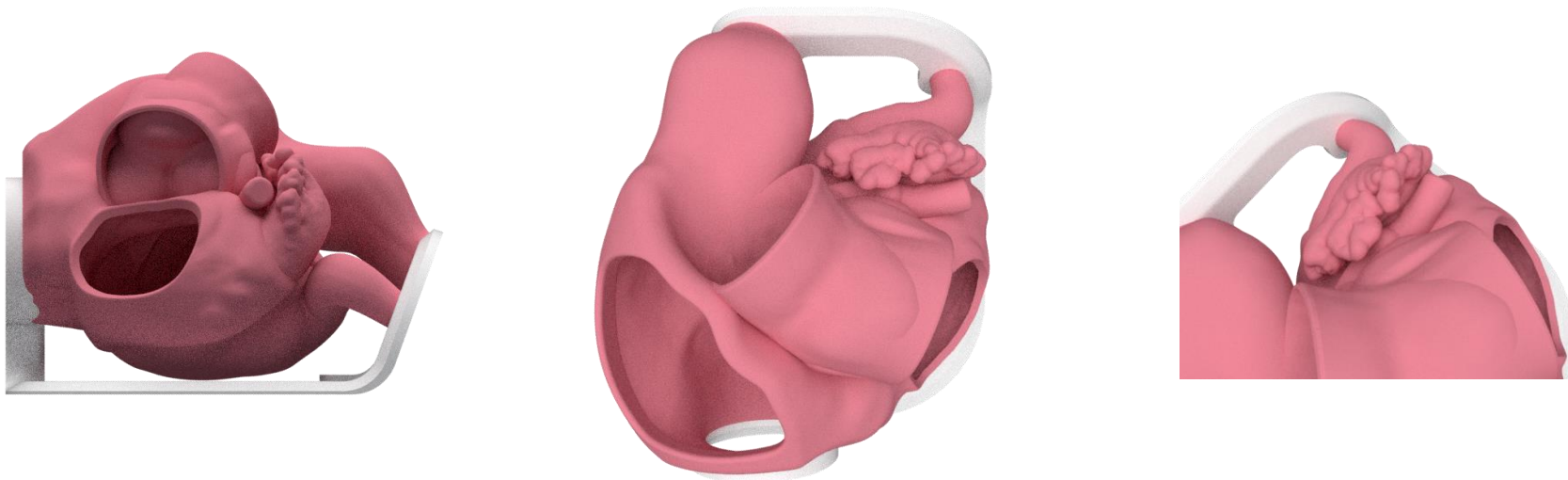


ANATOMY A017

2019-12-20

DISCLAIMER: Biomodex products are not medical devices and are not intended to diagnose, treat, cure, or prevent any health condition. These products have been designed for training and their safety and effectiveness as medical devices have not been demonstrated.

CARTRIDGE

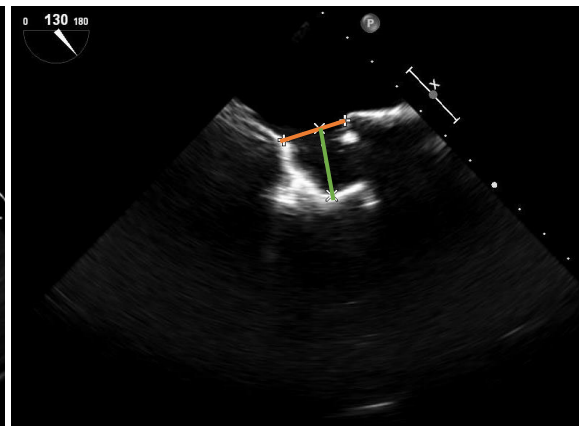
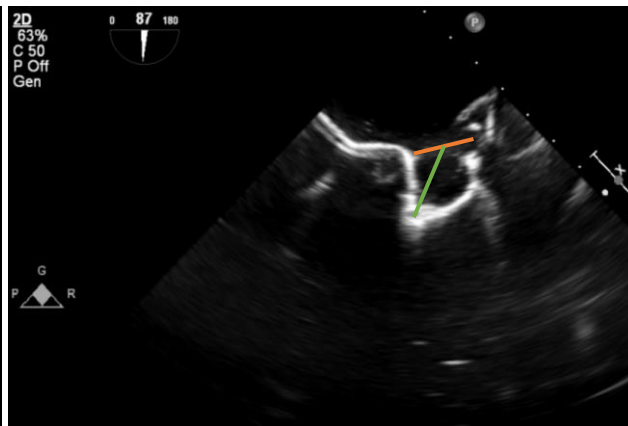
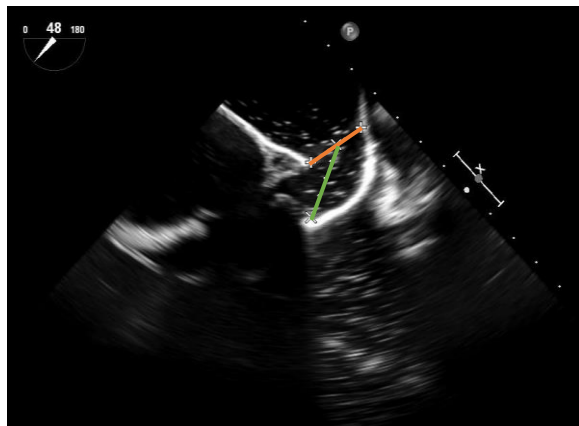
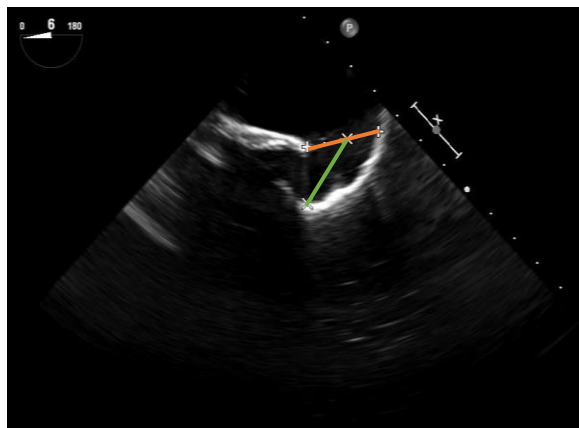


Printed cartridge of the anatomy



LAA MEASURES

LAA MEASURES



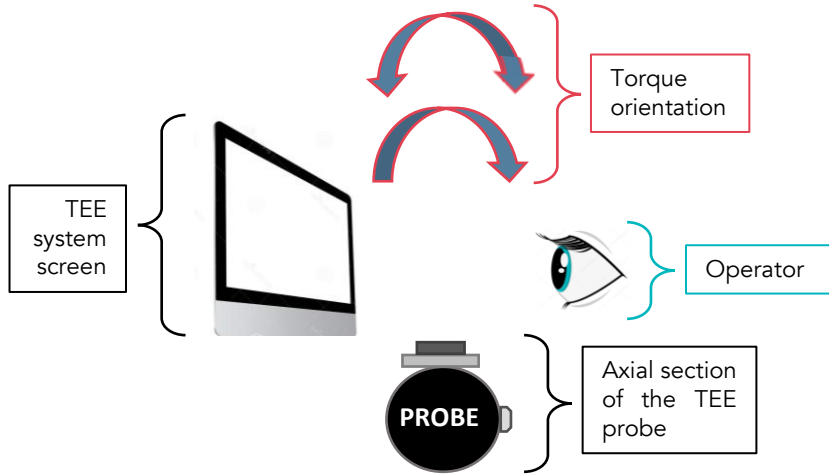
TEE angles	Ostium (mm)	Length (mm)
0°	22	22
45°	18.5	22.5
90°	20	21.5
135°	18.5	19.5



TEE INSTRUCTION FOR USE

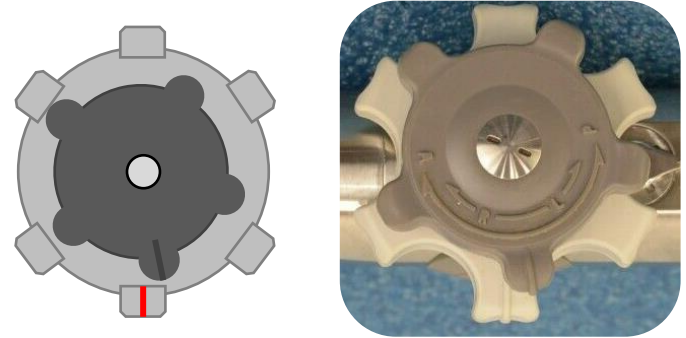
SCHEME LEGEND

Probe position
& Torque orientation



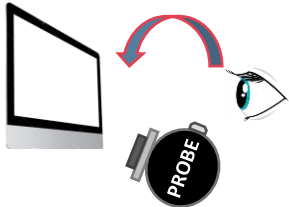
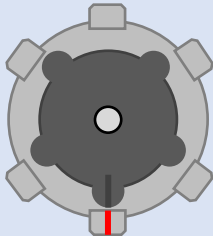
THE PATIENT IS ON THE OPERATOR'S LEFT

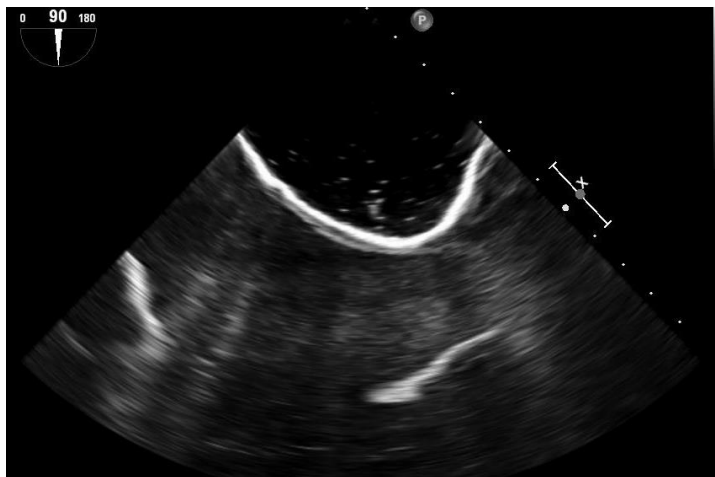
Wheels position



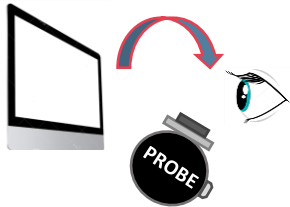
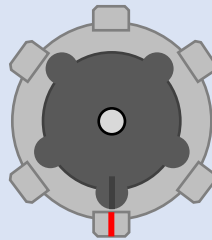
THE FOLLOWING ECHO INSTRUCTIONS HAVE BEEN DETERMINED WITH A X7-2t PHILIPS PROBE AND A iE33 PHILIPS SYSTEM

BICAVA VIEW

Angle	Probe Depth	Probe position & Torque orientation	Wheels position
90°	30-31 cm	 <p>THE PATIENT IS ON THE OPERATOR'S LEFT</p>	

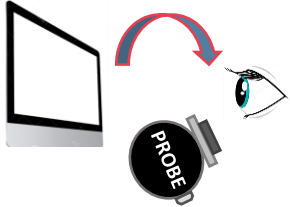
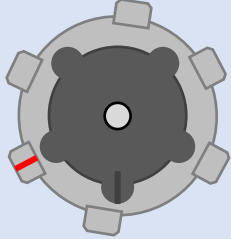


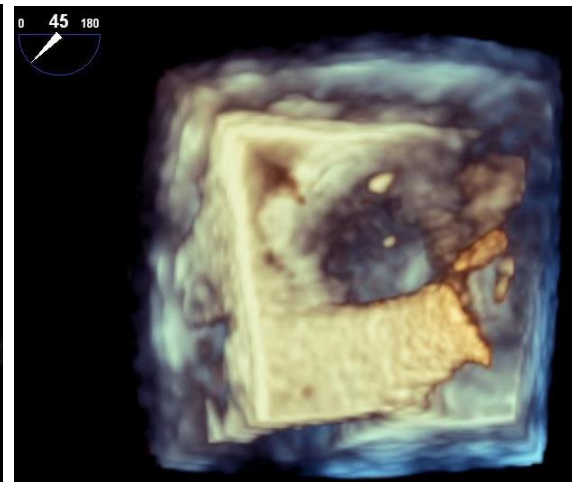
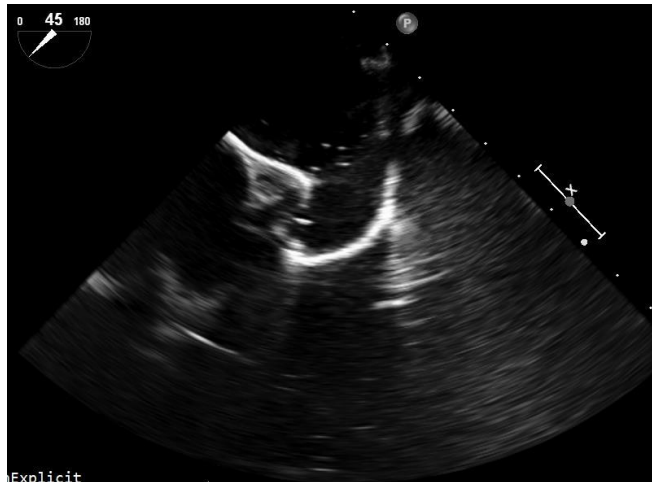
SHORT AXIS VIEW

Angle	Probe Depth	Probe position & Torque orientation	Wheels position
45°	30 cm	 <p>THE PATIENT IS ON THE OPERATOR'S LEFT</p>	

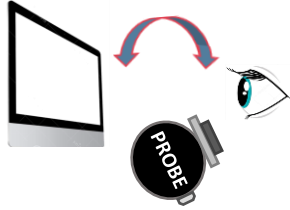
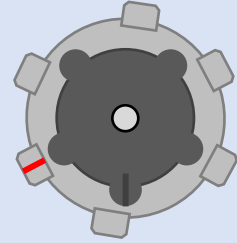


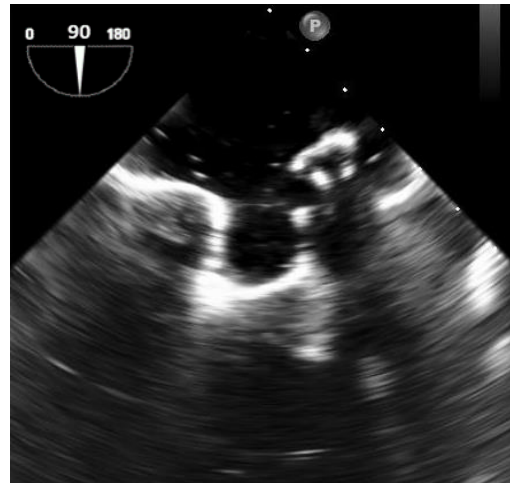
LAA 45°

Angle	Probe Depth	Probe position & Torque orientation	Wheels position
45°	30-31 cm	 <p>THE PATIENT IS ON THE OPERATOR'S LEFT</p>	

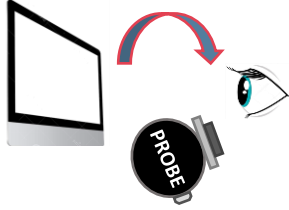
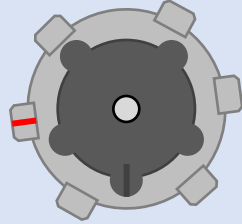


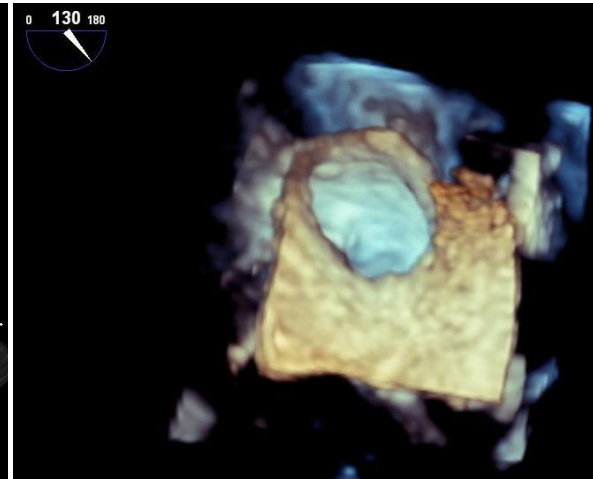
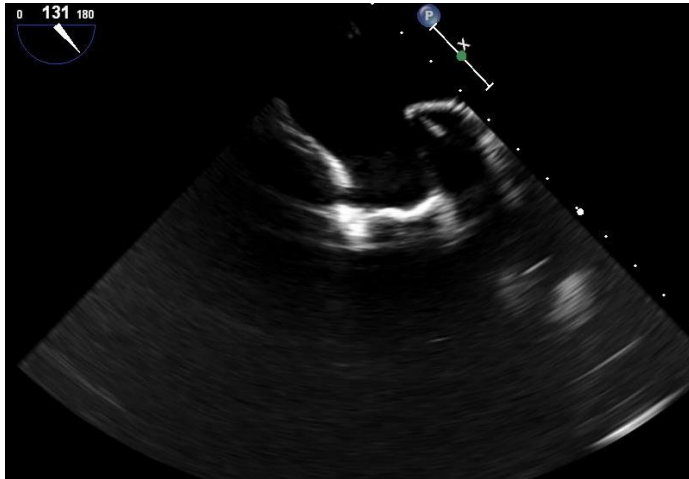
LAA 90°

Angle	Probe Depth	Probe position & Torque orientation	Wheels position
90°	30-31 cm	 <p>THE PATIENT IS ON THE OPERATOR'S LEFT</p>	

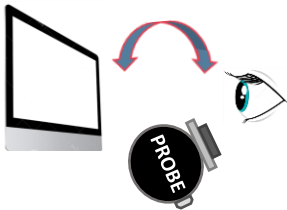


LAA 135°

Angle	Probe Depth	Probe position & Torque orientation	Wheels position
131°	30-31 cm	 <p>THE PATIENT IS ON THE OPERATOR'S LEFT</p>	



LAA 0°

Angle	Probe Depth	Probe position & Torque orientation	Wheels position
0°	29-30 cm	 <p>THE PATIENT IS ON THE OPERATOR'S LEFT</p>	