

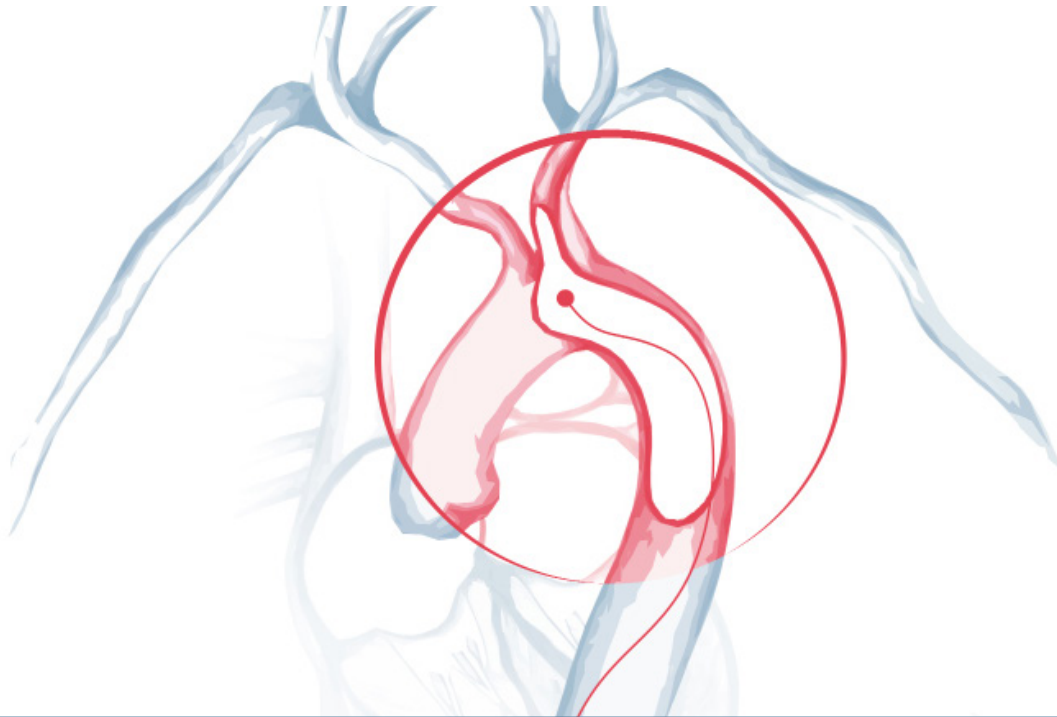
AORTIC ARCH

USING

BIOMODEX® EVIAS Plus™



AN INNOVATIVE APPROACH FOR ADVANCED PHYSICIAN TRAINING



BIOMODEX®
EVIAS PLUS™ STATION

+



AORTIC ARCH
NAVIGATION TRAINING

+



ISCHEMIC STROKE
OR ANEURYSM
CARTRIDGE

=



ISCHEMIC STROKE OR
UNRUPTURED ANEURYSM
TRAINING

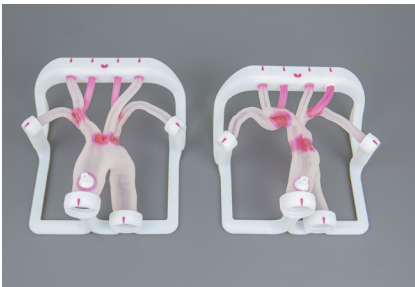
- ✓ DESIRED MECHANICAL BEHAVIOR BASED ON INVIVOTECH® TECHNOLOGY PROVIDING CRITICAL TACTILE FEEDBACK
- ✓ TYPE I/II/III ARCHES MODELED FROM PATIENT 3D ROTATIONAL ANGIOGRAPHY
- ✓ MULTI-USE AORTIC ARCHES
- ✓ LIGHTWEIGHT, PORTABLE, PLUG-AND-PLAY STATION

WARNING: This product is not a medical device and is not intended to diagnose, treat, cure, or prevent any health condition. BIOMODEX® products have been designed for training and their safety and effectiveness as medical devices have not been demonstrated.

AORTIC ARCH



KEY FEATURES

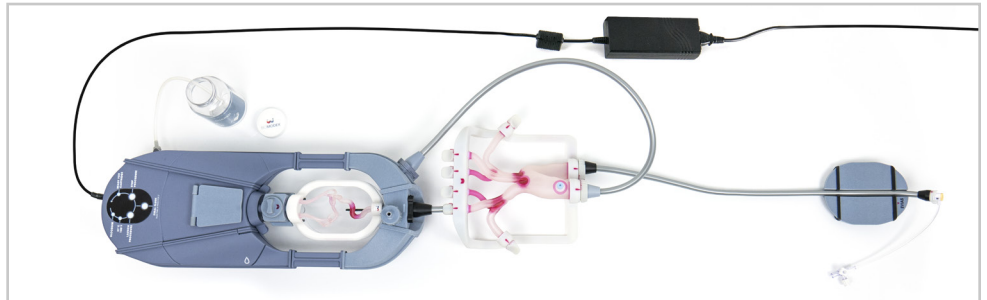


BIOMODEX® Aortic Arch Type I & III

- Customizable patient-specific aortic arch cartridges utilizing FDA cleared and CE marked software for segmentation of 3D RA or CTA
- INVIVOTECH®*, simulating tissue biomechanics
- Femoral access, right and left radial approaches
- Type I/II/III aortic arches including subclavian arteries, brachiocephalic arterial trunk, common carotid arteries, vertebral arteries, ascending and descending aorta.
- Contrast agent and X-ray compatibility

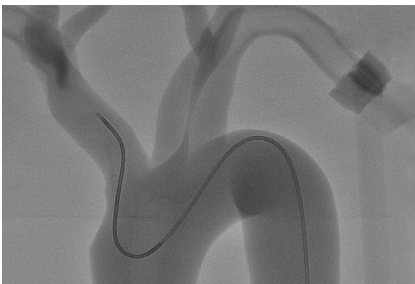
STATION & ACCESSORIES

- Compatible with EVIAS Plus™
- For use in cathlab
- Compact and portable
- Plug-and-play
- Simulated systemic flow
- BIOMODEX® BLOODSIM
- Femoral access
- Right and left radial accesses



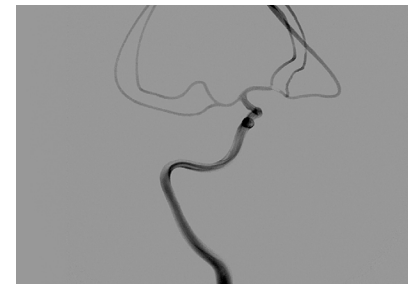
BIOMODEX® EVIAS Plus™ Station Set-Up With Anatomical Aortic Arch

PROCEDURES



BIOMODEX® Aortic Arch Type I Under Fluoroscopy

- Unruptured intracranial aneurysm
 - Flow diversion
 - Intrasaccular device
 - Coil embolization
 - Balloon-assisted coiling
 - Stent placement
- Ischemic stroke
 - Mechanical thrombectomy
 - Aspiration thrombectomy



BIOMODEX® Ischemic Cartridge Under Fluoroscopy

*Patent pending

US Office:

300 Crown Colony Drive, Suite 504
Quincy, MA 02169 - USA

EMEA Office:

2 rue de la Roquette
75011 Paris - FRANCE

BIOMODEX.COM