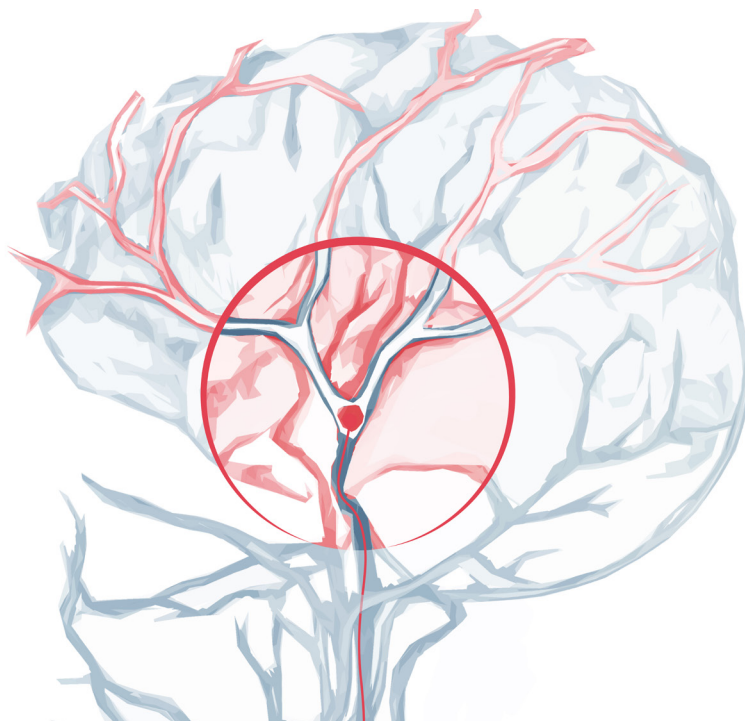


ISCHEMIC STROKE

USING
BIOMODEX® EVIAS Plus™



AN INNOVATIVE APPROACH FOR ADVANCED PHYSICIAN TRAINING



BIOMODEX®
EVIAS PLUS™ STATION

+



ISCHEMIC STROKE
CARTRIDGE

+



BIO-BASED CLOT

=

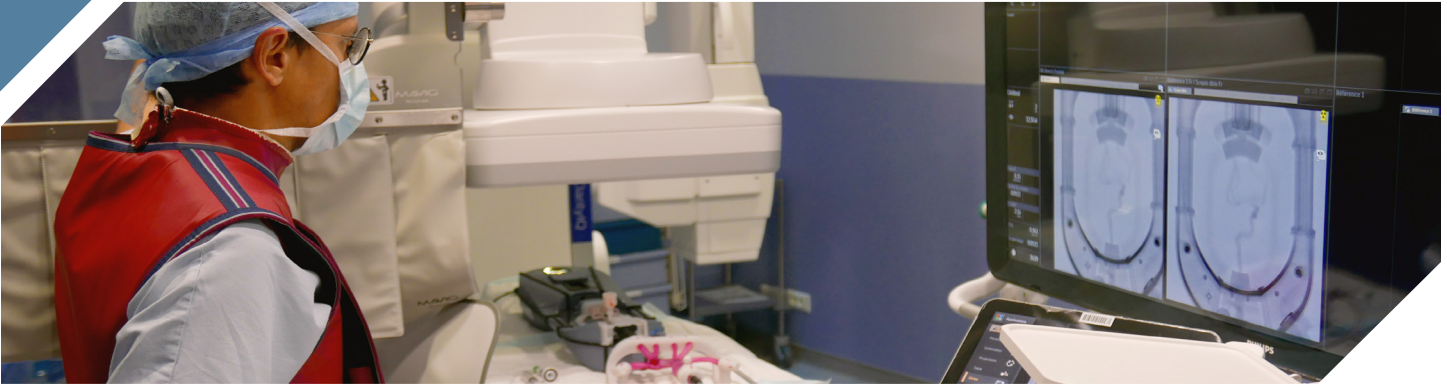


ISCHEMIC STROKE
TRAINING

- DESIRED MECHANICAL BEHAVIOR BASED ON INVIVOTECH® TECHNOLOGY PROVIDING CRITICAL TACTILE FEEDBACK
- BIO-BASED CLOTTING SOLUTIONS
- MULTI-USE ISCHEMIC STROKE CARTRIDGES
- LIGHTWEIGHT, PORTABLE, PLUG-AND-PLAY STATION

WARNING: This product is not a medical device and is not intended to diagnose, treat, cure, or prevent any health condition. BIOMODEX® products have been designed for training and their safety and effectiveness as medical devices have not been demonstrated.

ISCHEMIC STROKE



KEY FEATURES

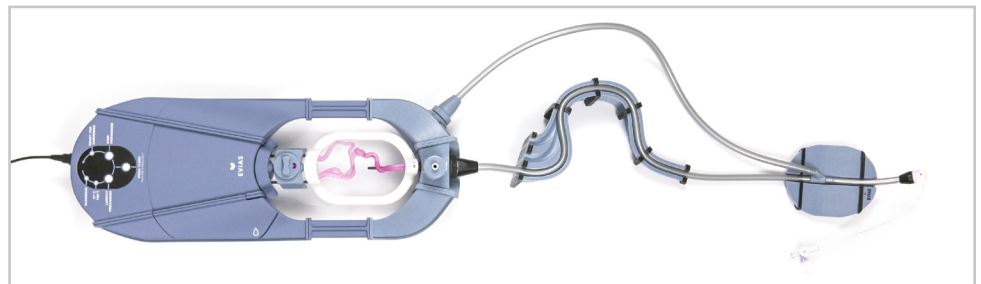


Standard Ischemic Cartridges

- Standard training cartridges including M1 / M2 and basilar artery occlusion
- Customizable cartridges utilizing FDA cleared and CE marked software for segmentation of 3D RA or CTA
- Tissue biomechanics simulated based on INVIVOTECH®*
- Contrast agent and X-ray compatibility

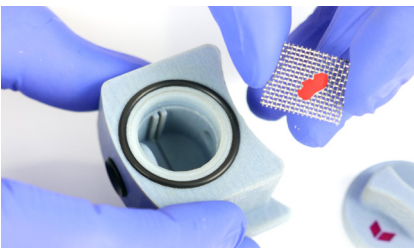
STATION

- For use in cathlab
- Compact and portable
- Plug-and-play
- Adjustable Aortic Arch
- Simulated systemic flow
- BIOMODEX® BLOODSIM
- Clot injection system
- Distal Clot Filter



Top View of the BIOMODEX® EVIAS Plus™ Ischemic Set-up with the Adjustable Aortic Arch

ACCESSORIES



BIOMODEX® EVIAS Plus™ Distal Clot Filter trapping a bio-based clot

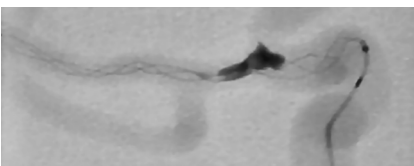
- Standard anatomical aortic arches type I / II / III including radial access
- Customizable patient-specific aortic arches
- Bio-based clots (hard and soft)



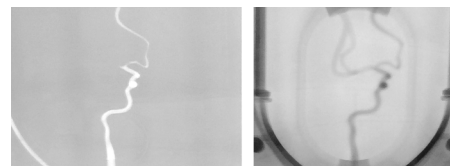
BIOMODEX® Aortic Arch Type I, II & III

ISCHEMIC STROKE PROCEDURES

- Mechanical thrombectomy
- Aspiration thrombectomy



Clot Retrieval in Cartridge Under Fluoroscopy



Cartridge Under Fluoroscopy with Contrast Injection

US Office:

300 Crown Colony Drive, Suite 504
Quincy, MA 02169 - USA

EMEA Office:

2 rue de la Roquette
75011 Paris - FRANCE

BIOMODEX.COM